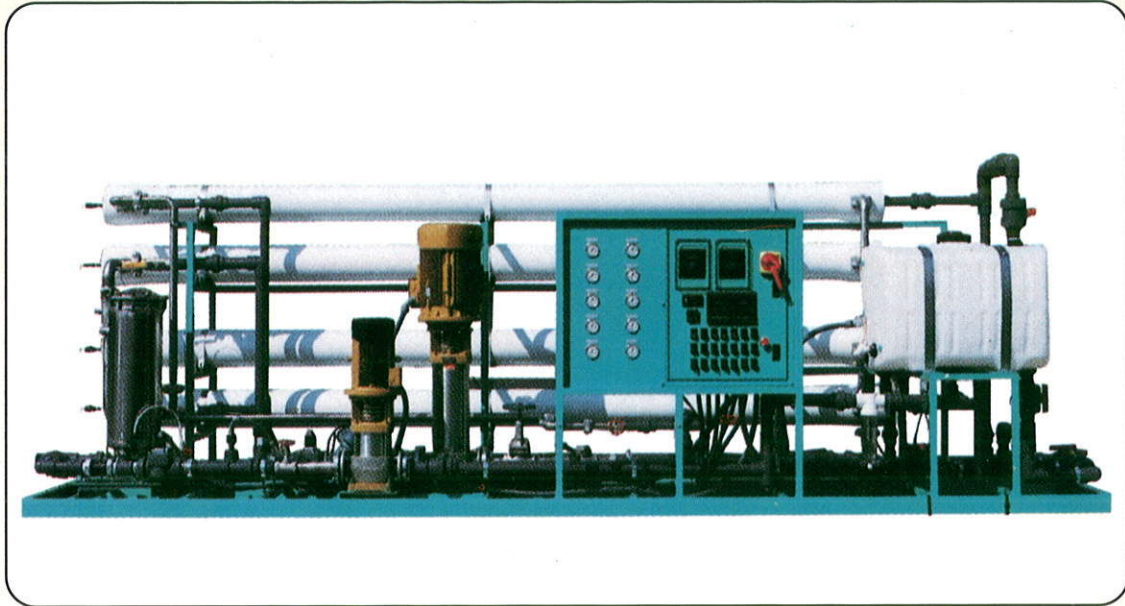


REVERSE OSMOSIS DELUXE MODELS



Model SPL-70D

STANDARD FEATURES

- Standard models for flow rates from 7 GPM to 250 GPM
- Low pressure shut off switch
- Brackish water TFC RO membranes with 99% average salt rejection
- Automatic feed water shut off valve
- Flowmeters
- Powder coated frame
- Concentrate pressure gauge
- TDS meter for monitoring permeate quality
- SS 316 high pressure valves

OPTIONAL FEATURES

- Sediment prefilter
- PLC control
- Chemical dosing
- 316 stainless steel pump
- Fiberglass pressure vessels
- Concentrate recycle valve
- Prefilter pressure gauges
- Automatic fast flush of membranes
- Clean in place system



SCOTTSCENTER PTE LTD

Model	Permeate GPD	Inlet Size mm	Recovery % (w/o Recycle)	Motor HP (3 phase)	Length mm	Width mm	Height mm
SPL-7D	10,080	32	55	5.5	2770	800	1500
SPL-10D	14,400	32	55	5.5	2770	800	1500
SPL-15D	21,600	32	60	5.5	2770	1100	1500
SPL-20D	28,800	50	60	7.5	4000	1150	1500
SPL-30D	43,200	50	60	10	4000	1150	1500
SPL-40D	57,600	50	60	15	5500	1200	1700
SPL-50D	72,000	50	60	15	5500	1200	1700
SPL-60D	86,400	50	65	20	5500	1200	1700
SPL-70D	100,800	50	70	20	5500	1600	1700
SPL-80D	115,200	65	70	20	5500	1600	1700
SPL-100D	144,000	65	70	30	5500	1600	1700
SPL-110D	158,400	80	75	30	7320	1550	1900
SPL-130D	187,200	80	75	40	7320	1550	2200
SPL-150D	216,000	80	75	40	7600	2000	1800
SPL-175D	252,000	100	75	40	7600	2000	1800
SPL-200D	288,000	100	75	50	7600	2000	1900
SPL-225D	324,000	100	75	60	7600	2000	1900
SPL-250D	360,000	100	75	70	7600	2000	2200

* Maximum feed TDS 1000 ppm.

* The feed water should be free of chlorine, oil and suspended particles. The SDI index should be below 5.

* The minimum pressure required at the inlet of reverse osmosis plant is 30psi to avoid cavitation of the high pressure pump.

* Dimensions above are without optional features.

INSTALLATION

The standard units are free standing, requiring no special foundations other than a firm level base suitable to take the plant weight. A suitable electric supply must be provided.

Scottscenter can supply complete pretreatment and post treatment equipment for any application. The pretreatment requirement will depend upon the quality of raw water.



SCOTTSCENTER PTE LTD
 2A SECOND CHIN BEE ROAD
 SINGAPORE 618781
 TEL: 68614077 FAX: 68619556
 EMAIL: spl@scotts.com.sg

BRACKISH WATER REVERSE OSMOSIS PLANT