

BASE EXCHANGE



- Standard models for flow rates from 1.3 M³/HR to 45.0 M³/HR.
- Exchange capacities from 1.3kg to 69kg as CaCO₃.
- Choice of regeneration control systems-manual or automatic by time, time store and water meter.
- Control options use the latest technology.
- All models designed for simplex, duplex or multiple unit operation.
- Standard units have twin piston automatic multiport control valve in corrosion resistant polypropylene and glass reinforced ABS Valve provides full 5-cycle regeneration and has manual override.
- 12 VAC operation for maximum safety.
- Units are easy to install & operate. Require minimum maintenance.
- Full service backup, installation and commissioning services available.
- Customized units can be supplied for higher flow rates.

WATER SOFTENERS



SCOTTSCENTER PTE LTD

TECHNICAL DATA

MODEL	MAXIMUM SERVICE FLOW M ³ / HR	CAPACITY * BETWEEN REGENS. (M ³)	SALT USED PER REGN. KGS	RESIN VESSEL SIZE DIA X HT (MM)
BE 8	1.27	6.62	3.6	200 X 1100
BE 10	2.00	12.98	6.8	250 X 1350
BE 12	2.91	17.49	9.2	300 X 1200
BE 14	3.97	27.59	14.6	350 X 1625
BE 16	5.22	31.84	16.9	400 X 1625
BE 21	7.95	53.10	28.1	525 X 1500
BE 24	11.58	73.18	38.8	600 X 1725
BE 30	17.93	135.84	72.0	750 X 1800
BE 36	26.33	199.50	105.8	900 X 1800
BE 42	35.41	254.67	135.0	1050 X 1950
BE 48	45.40	344.62	182.7	1200 X 2050

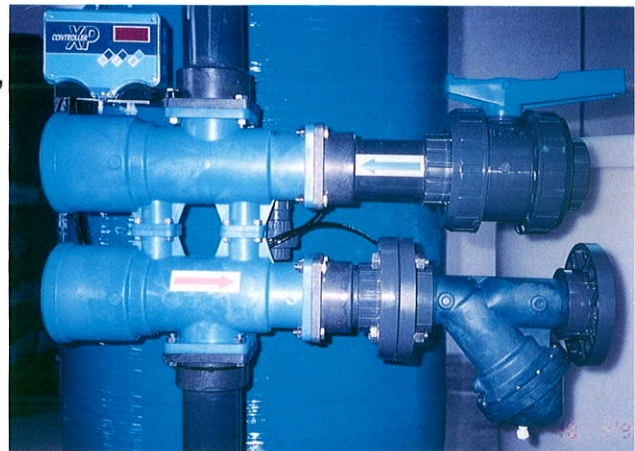
* At 200 MG/L hardness influent

* Feed water should be filtered, free of chlorine, oil & organics.

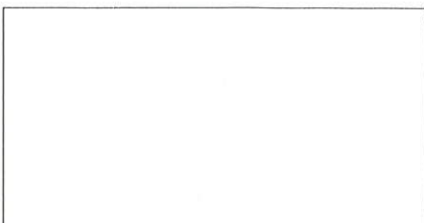
* Treated water hardness commercial zero

INSTALLATION

The standard units are free standing, requiring no special foundations other than a firm level base suitable to take the plant weight. A suitable electric supply must be provided.



MULTIPOINT VALVE WITH CONTROLLER



SCOTTSCENTER PTE LTD
 2A SECOND CHIN BEE ROAD
 SINGAPORE 618781
 TEL: 68614077 FAX: 68619556
 EMAIL: spl@scotts.com.sg